

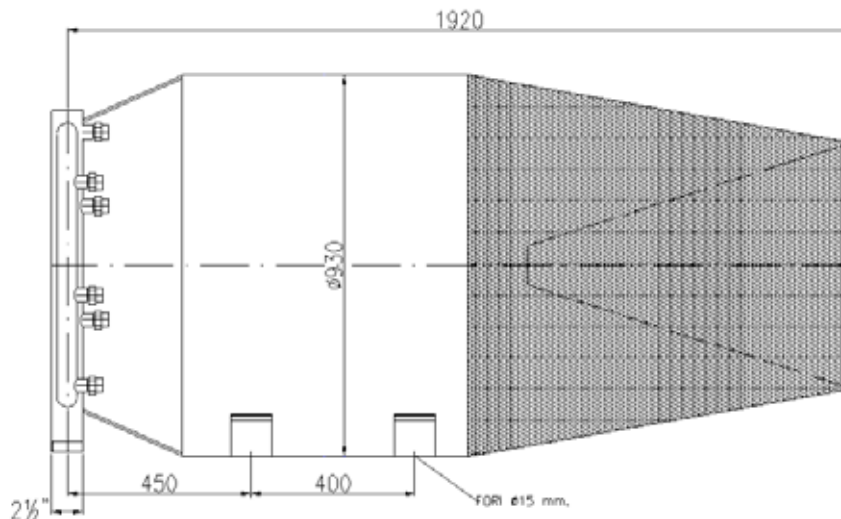
Caratteristiche Tecniche

Corpo: Acciaio al Carbonio- Acciaio INOX
 Ventola : fibra di vetro con mozzo in lega leggera
 Ingresso : Flangiato ANSI 150 RF o UNI - DIN
 O filettato 2" Gas maschio
 Materiale flange: ASTM A 105 - AISI 304
 Rapporto di espansione : 1:700
 Adatto all' uso di schiumogeni per fumi caldi
 Verniciatura : 1 mano di Fondo epossidico,
 2 mani di smalto poliuretano RAL 3000
 nella versione in acciaio al carbonio

Technical Characteristics

Body: Carbon Steel – Stainless Steel
 Fan : Glass fiber with light alloy shaft
 Inlet : flanged ANSI 150 RF or UNI – DIN
 or threaded 2" Gas male
 Flange material: ASTM A 105 - AISI 304
 Expansion ratio : 1: 700
 Suitable to be employed with foaming for hot fumes
 Painting ; 1 coat of epoxy primer and
 2 coats of polyurethanic enamel RAL 3000
 in the carbon steel version

MODELLO <i>MODEL</i>	PORTATA IT <i>flow rate it.</i> <i>At 5 bar.</i>	CONNESSIONE <i>COUPLING</i>	PESO Kg. <i>WEIGHT Kg</i>
URJ 3200	200	Flange 2" – UNI45/70	7
URJ 3400	400	Flange 2" – UNI45/70	14



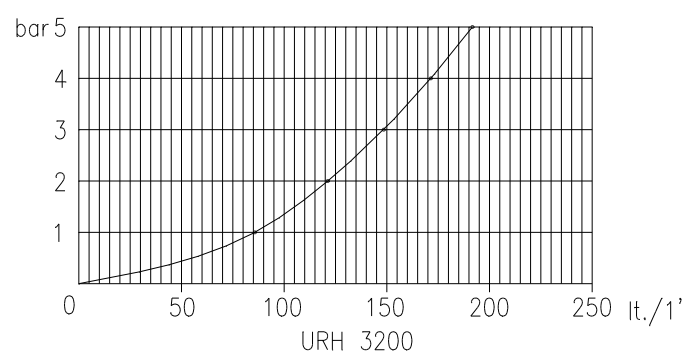
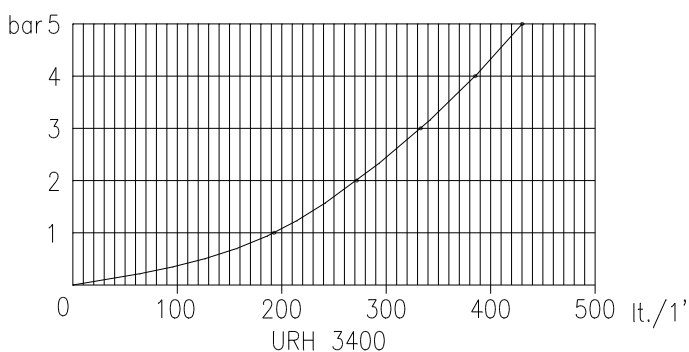
Caratteristiche Tecniche

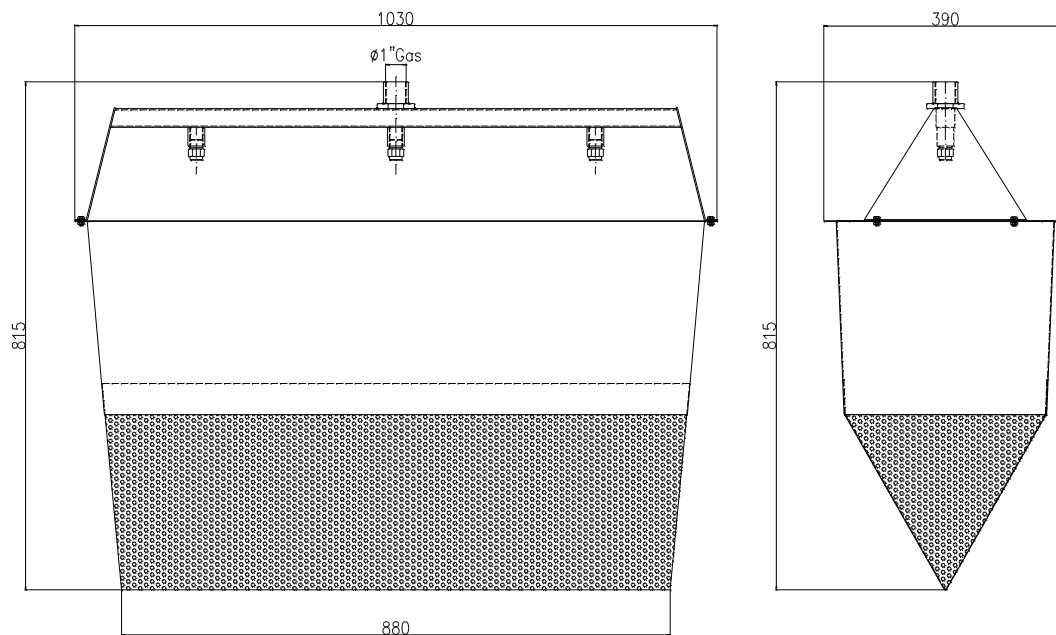
Corpo: Acciaio Inox- Acciaio al Carbonio
 Ingresso : Flangiato ANSI 150 RF o UNI – DIN,
 o filettato 2½" Gas maschio, o scanalato
 Materiale flange: ASTM A 105 - AISI 304
 Rapporto di espansione : 1:750
 Adatto all' uso di schiumogeni per fumi caldi
 Verniciatura : 1 mano di Fondo epossidico,
 2 mani di smalto poliuretano RAL 3000

Technical Characteristics

Body: Stainless Steel–Carbon Steel
 Inlet : flanged ANSI 150 RF or UNI – DIN,
 or threaded 2½" Gas male, or grooved
 Flange material: ASTM A 105 - AISI 304
 Expansion ratio : 1: 750
 Suitable to be employed with foaming for hot fumes
 Painting ; 1 coat of epoxy primer and
 2 coats of polyurethanic enamel RAL 3000

MODELLO <i>MODEL</i>	Portata Nomin. It. <i>Nominal Flow It.</i> <i>At 5 bar.</i>	CONNESSIONE <i>COUPLING</i>	PESO Kg. <i>WEIGHT Kg</i>
URH 3200	200	Flange 2½" – UNI-Groove	65
URH 3400	400	Flange 2½" – UNI - Groove	65





Caratteristiche Tecniche

Corpo: Acciaio Inox- Acciaio al Carbonio
 Ingresso : filettato 1" Gas femmina
 Portata miscela : 105 lt/1' @ 5bar
 Rapporto di espansione : 1:450
 Adatto all' uso di schiumogeni per fumi caldi
 Peso : circa 20 Kg.
 Verniciatura per acciaio al carbonio :
 1 mano di Fondo epossidico,
 2 mani di smalto poliuretano RAL 3000

Technical Characteristics

Body: Stainles Steel–Carbon Steel
 nlet : threaded 1" Gas female,
 Mixture flow rate : 105 lt/1' @ 5bar
 Expansion ratio : 1: 450
 Suitable to be employed with foaming for hot fumes
 Weight : 20 Kg. approx..
 Painting for carbon steel :
 1 coat of epoxy primer and
 2 coats of polyurethanic enamel RAL 3000