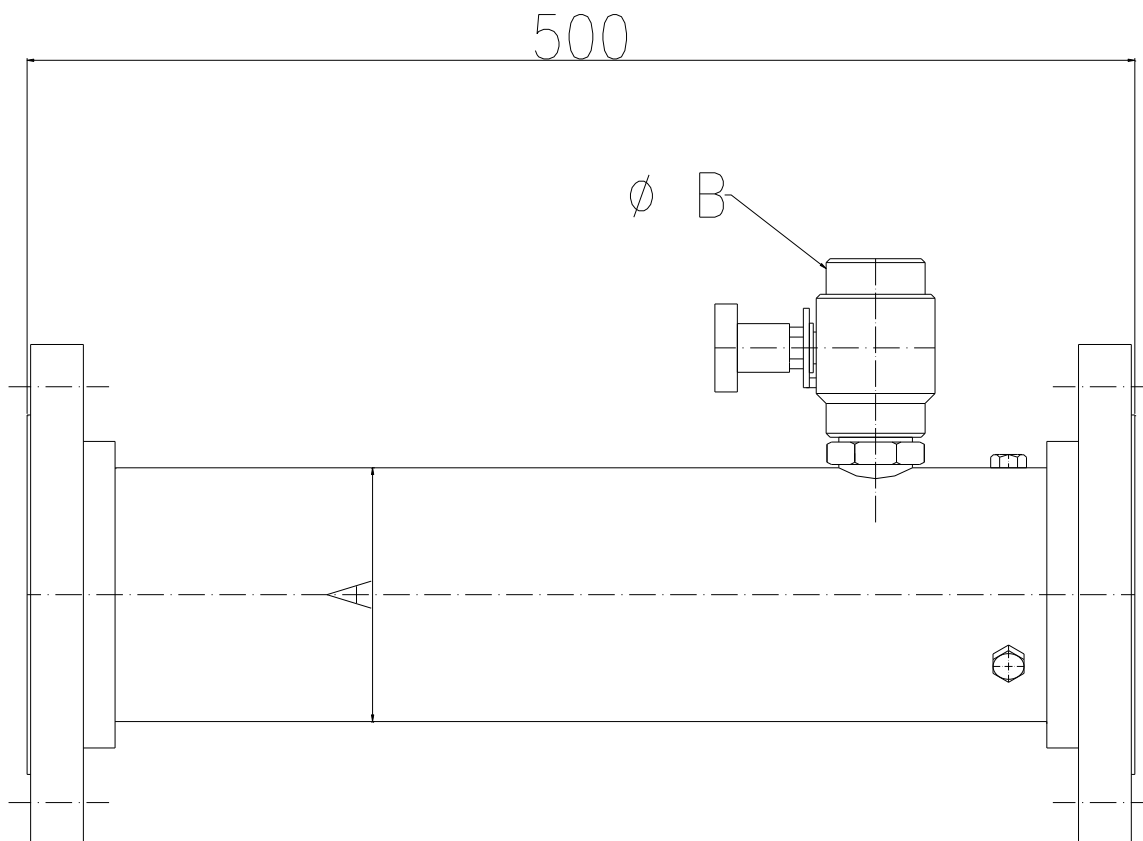


Caratteristiche Tecniche

Portata Mixer : 100 - 200 - 400 lt./1'
 Rateo miscelazione : da 0% a 6% continuo
 Materiale Corpo: Alluminio
 Materiale Ugelli: Alluminio
 A richiesta, realizzabile in Bronzo o acciaio Inox
 Attacchi mixer : UNI 45/70 (o altri Std.)
 Verniciatura : 1 mano di Fondo epossidico,
 2 mani di smalto poliuretano RAL 3000

Technical Characteristics

Mixer flow rate: 100 - 200 - 400 lt./1'
 Foam mixing ratio : from 0% to 6% continuous
 Body: Aluminium alloy
 Nozzles: Aluminium alloy
 On request, can be made in Bronze or Stainless Steel
 Mixer couplings : UNI 45/70 thread (or other Std.)
 Painting ; 1 coat of epoxy primer and
 2 coats of polyurethanic enamel RAL 3000



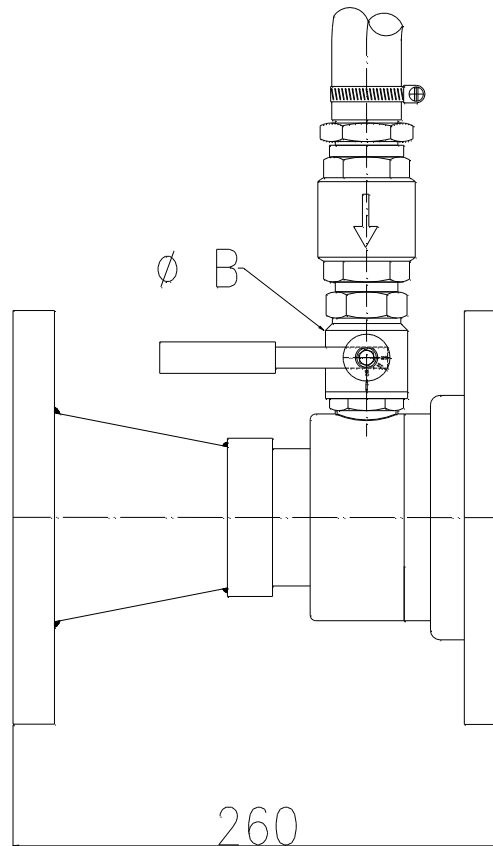
Caratteristiche Tecniche

Rateo miscelazione : da 0% a 6%
 Materiale Corpo: Acciaio al carbonio/inox
 Materiale Ugelli: Alluminio / bronzo
 Flange : ANSI 150Rf o UNI PN16
 Verniciatura : 1 mano di Fondo epossidico,
 2 mani di smalto poliuretano RAL 3000

Technical Characteristics

Foam mixing ratio : from 0% to 6%
 Body: carbon / stainless steel
 Nozzles: Aluminium alloy / bronze
 Flanges: ANSI 150Rf or UNI PN16
 Painting ; 1 coat of epoxy primer and
 2 coats of polyurethanic enamel RAL 3000

MODELLO MODEL	PORTATA LT/1' @7BAR FLOW LT/1' @7BAR	A	B	FLANGE IN	FLANGEOUT	PESO WEIGHT
URF-L3	500 - 900	3"	¾"	3"	3"	8Kg
URF-L4	1000 - 2500	4"	1"	4"	4"	12Kg
URF-L6	2600 - 3500	6"	1½"	6"	6"	16Kg



Caratteristiche Tecniche

Rateo miscelazione : da 0% a 6%
Materiale Corpo: Ottone o Alluminio/inox
Materiale Ugelli: Alluminio / Ottone
Flange : ANSI 150Rf o UNI PN16
Tubo aspirazione in gomma da 2 mt
Verniciatura : 1 mano di Fondo epossidico,
2 mani di smalto poliuretano RAL 3000

Technical Characteristics

Foam mixing ratio : from 0% to 6%
Body: Brass or Aluminium / stainless steel
Nozzles: Aluminium alloy / Brass
Flanges: ANSI 150Rf or UNI PN16
Rubber pick-up pipe 2 mt length
Painting ; 1 coat of epoxy primer and
2 coats of polyurethanic enamel RAL 3000

MODELLO MODEL	PORTATA LT/1' @7BAR FLOW LT/1' @7BAR	corpo body	B	FLANGE IN	FLANGEOUT	PESO WEIGHT
DRF-C3	500 - 900	3"	¾"	3"	3"	7Kg
DRF-C4	1000 - 2500	4"	1"	4"	4"	10Kg
DRF-C6	2600 - 3500	6"	1½"	6"	6"	13Kg

